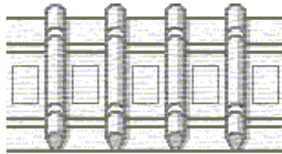


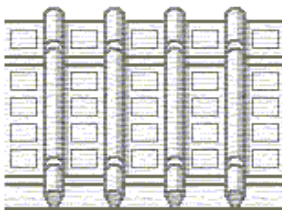
Línea XTL: 100% poliéster transparente



F. AUTOMATICA - 40 XTL

ANCHURA: 40 mm.
 RAPPORT: 1x 2,00-2,20
 COMPOSICION: 100% Poliéster
 CORDON: 2 uds.
 COLOR: Transparente
 PRESENTACION: 150 mts.

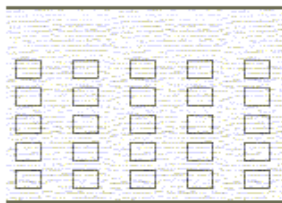
CODIGO: 4000203



F. AUTOMATICA - 70 5B XTL

ANCHURA: 70 mm.
 RAPPORT: 1x 2,00-2,20
 COMPOSICION: 100% Poliéster
 CORDON: 2 uds.
 COLOR: Transparente
 PRESENTACION: 150 mts.

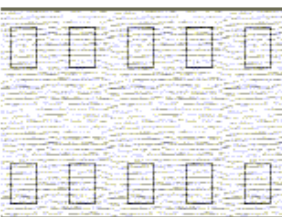
CODIGO: 7003203



CORTITEX - 75 5B XTL / 90 4B XTL y 120 6B XTL

ANCHURA: 75 mm., 90 mm. y 120 mm.
 COMPOSICION: 100% Poliéster
 BOLSAS: 5 uds. (75 mm.), 4 uds. (90 mm.) y 6 uds. (120 mm.)
 COLOR: Transparente

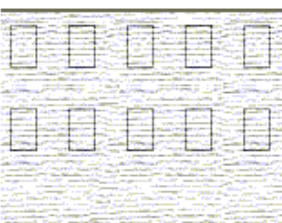
CODIGOS: 7502903 (5 bolsas) - PRES.: 150 mts.
 9002903 (4 bolsas) - PRES.: 200 mts.
 1202903 (6 bolsas) - PRES.: 100 mts.



ONDA-TEX - 75 2B XTL (ONDA PERFECTA)

ANCHURA: 75 mm.
 COMPOSICION: 100% Poliéster
 BOLSAS: 2 uds.
 COLOR: Transparente
 PRESENTACION: 150 mts.

CODIGO: 7500903



ONDA-CRUZ - 75 2B XTL (ONDA PERFECTA)

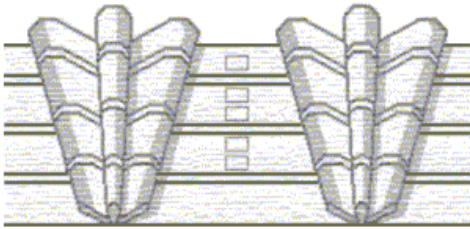
ANCHURA: 75 mm.
 COMPOSICION: 100% Poliéster
 BOLSAS: 2 uds.
 COLOR: Transparente
 PRESENTACION: 100 mts.

CODIGO: 7505803



VICIOSO sc
fábrica de cintas

Línea XTL: 100% poliéster transparente



TRIPLEC - 75 5B/3C (200) XTL

ANCHURA: 75 mm.
RAPPORT: 1x 2,00
COMPOSICION: 100% Poliéster
CORDON: 3 uds.
COLOR: Transparente
PRESENTACION: 150 mts.

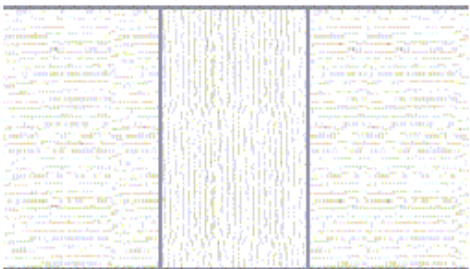
CODIGO: 7503603



ARMADORA - 70, 90 y 110 XTL

ANCHURA: 70 mm., 85 mm. y 110 mm.
COMPOSICION: 100% Poliéster
COLOR: Transparente
PRESENTACION: 200 mts.

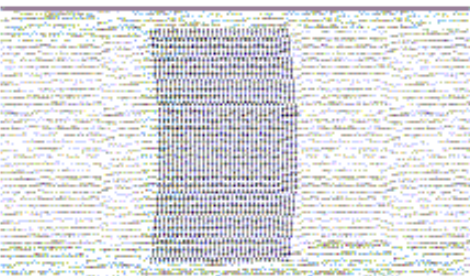
CODIGOS: 7001303 (70 mm.)
9001303 (85 mm.)
1101303 (110 mm.)



PASABARRA PRESILLA CINTA 100/45 XTL

ANCHURA: 100 mm.
COMPOSICION: 100% Poliéster
COLOR: Transparente
PRESENTACION: 100 mts.

CODIGO: 1004503



PASABARRA PRESILLA HILOS 100/40 XTL

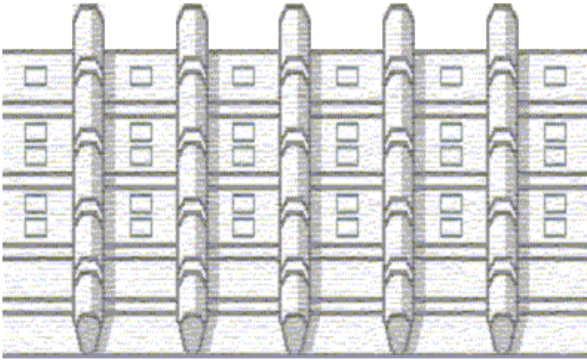
ANCHURA: 100 mm.
COMPOSICION: 100% Poliéster
COLOR: Transparente
PRESENTACION: 100 mts.

CODIGO: 1004003



VICIOSO sc
fábrica de cintas

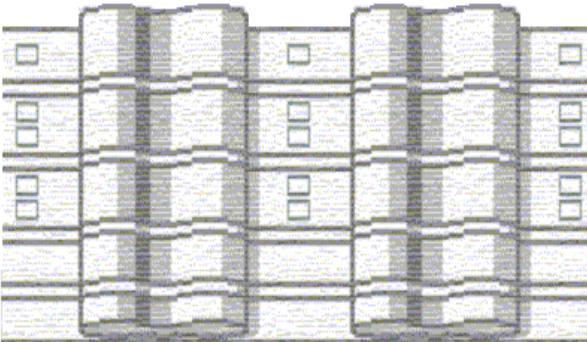
Línea XTL: 100% poliéster transparente



F. AUTOMATICA - 120 5B (200) XTL

ANCHURA: 120 mm.
RAPPORT: 1x 2,00
COMPOSICION: 100% Poliéster
CORDON: 4 uds.
COLOR: Transparente
PRESENTACION: 100 mts.

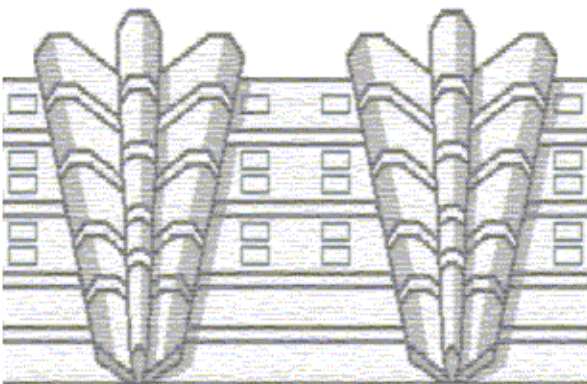
CODIGO: 1200203



TABLAS - 120 5B (230) XTL

ANCHURA: 120 mm.
RAPPORT: 1x 2,30
COMPOSICION: 100% Poliéster
ANCHURA PALA : 60 mm.
CORDON: 4 uds.
COLOR: Transparente
PRESENTACION: 100 mts.

CODIGO: 1203003



TRIPLEC - 120 5B (230) XTL

ANCHURA: 120 mm.
RAPPORT: 1x 2,30
COMPOSICION: 100% Poliéster
CORDON: 4 uds.
COLOR: Transparente
PRESENTACION: 100 mts.

CODIGO: 1203603